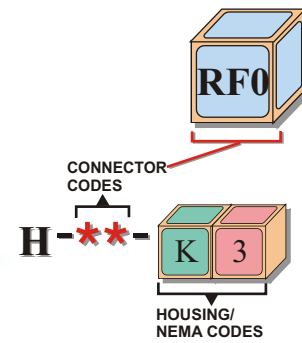
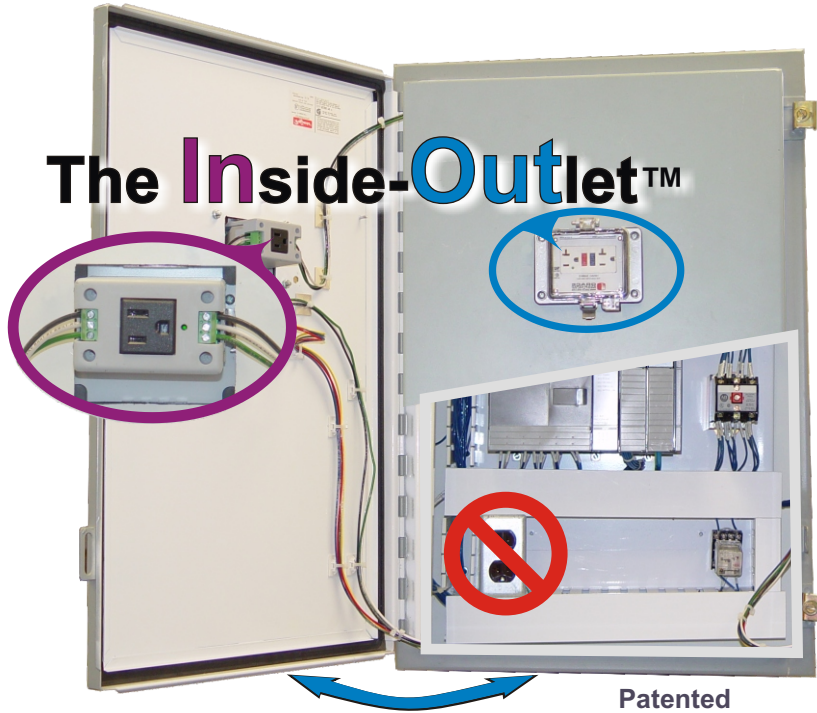


ExInPlex® GFCI Inside-Outlet™ Utility Receptacle



More Safety & Reduced Panel Space...ONE unit



One Receptacle Inside and Outside!

Testing and resetting a GFCI⁽¹⁾ inside your panel is impractical under NFPA 70e. **That's why GFCI receptacles belong on the outside of your panel!**

ExInPlex® GFCI Outlets

Part Numbers

NEMA 12/4	H-RF0-K3
NEMA 12/4 with 15A CB	H-RF15-K3
NEMA 12/4 with 20A CB	H-RF20-K3
NEMA 4X	H-RF0-K2
NEMA 4X with 15A CB	H-RF15-K2
NEMA 4X with 20A CB	H-RF20-K2
NEMA 1	H-RF0-K1
NEMA 1 with 15A CB	H-RF15-K1
NEMA 1 with 20A CB	H-RF20-K1



- ▶ 'TEST/RESET' Safely Outside the Panel
- ▶ Finger Safe
- ▶ Outgoing Terminals for GFCI Protected Power
- ▶ Power 'ON' LED
- ▶ Maintains Enclosure Rating
- ▶ NEMA 1, 12/4 or 4X.
- ▶ Stand Alone Outlet or with a Programming Port.

NFPA 79: GFCI's....The Control Panel Utility Receptacle Standard:⁽²⁾

- **All** Utility Receptacles must be GFCI Protected
- **All** External Utility Receptacles must be Covered
- **All** Covers must Maintain Enclosure Rating

1.) OSHA requires monthly testing of all GFCI outlets

2.) NFPA 79 Electrical Machinery Safety Standard 2002 Edition Sections 16.1.1 (6), 16.1.2

US Patents 6,700,062
and 6,831,226 B2



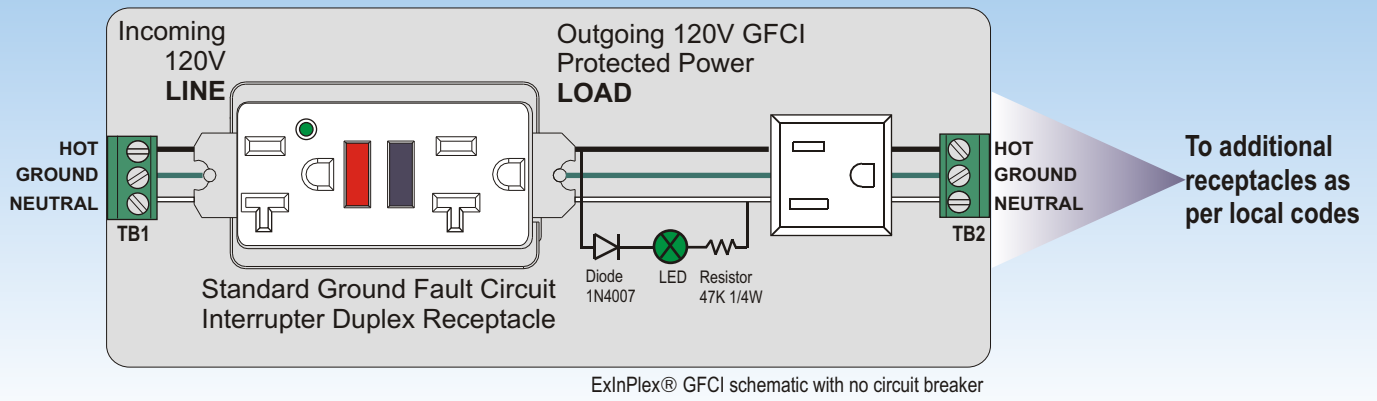
GRACE
ENGINEERED
PRODUCTS, INC
www.grace-eng.com

5000 Tremont Avenue, Suite 203
Davenport, IA 52807
(800) 280-9517 Fax: (563) 386-9639

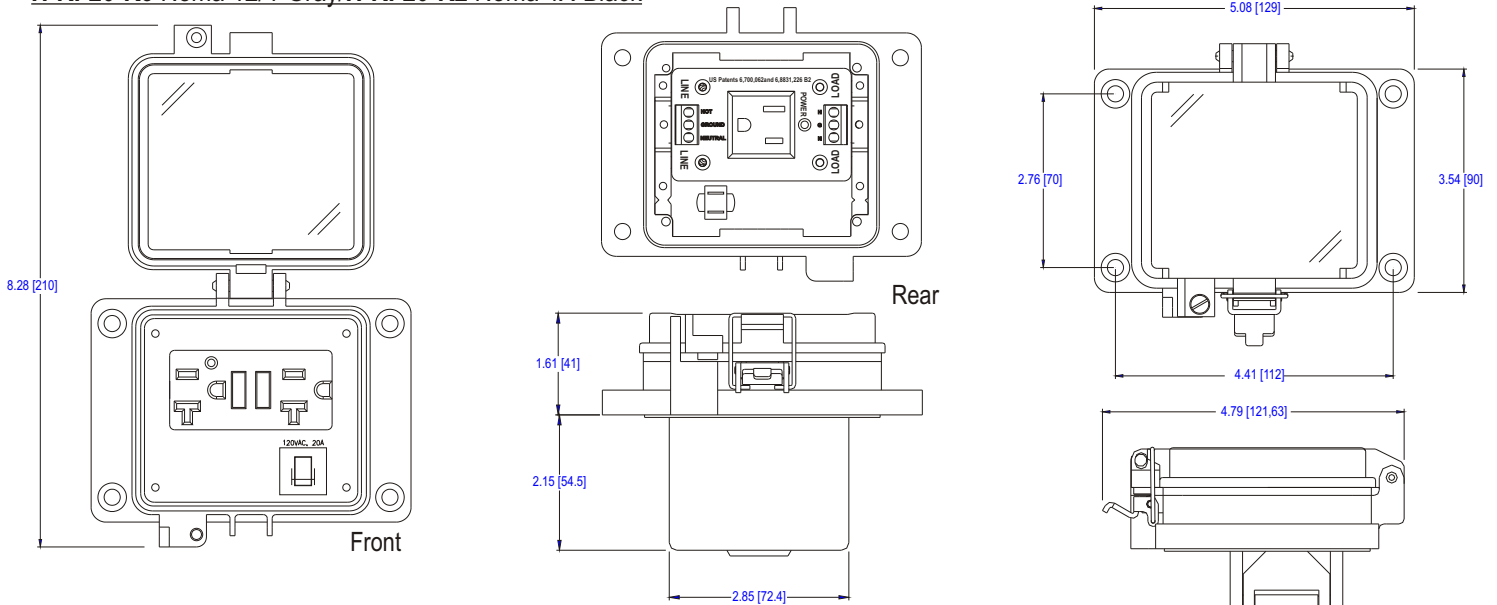
©2005 Grace Engineered Products, Inc.
GracePort® is a registered Trademark of Grace Engineered Products, Inc

DS-ExInPlex-2005-09

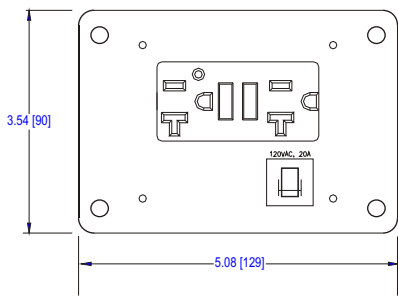
ExInPlex® Installation Instructions



H-RF20-K3 Nema 12/4-Gray/H-RF20-K2 Nema 4X-Black



H-RF20-K1 Nema 1 Plate

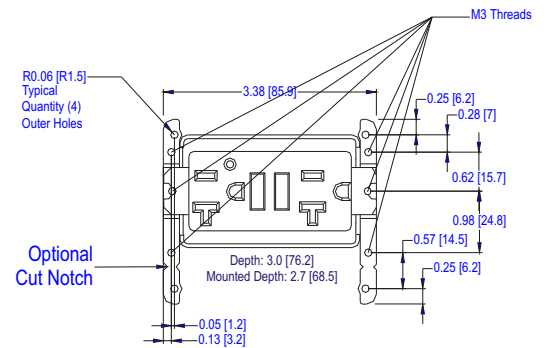
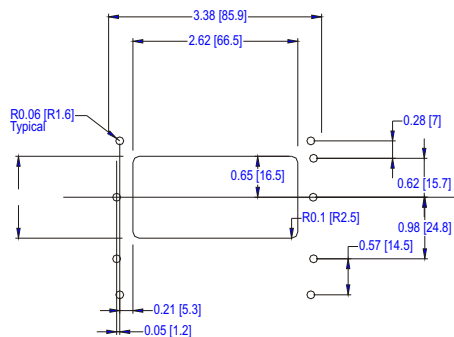
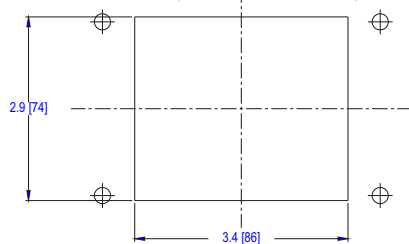


⚠️ INSTALLATION

ExInPlex® receptacles are intended to be mounted in or on an enclosure product. Installation should be performed by a qualified electrician and adhere to applicable regulatory codes.

- 1) Cut panel opening and mount ExInPlex® receptacles to enclosure with gasket.
- 2) Connect input power to LINE terminal(TB1) as per local codes.
- 3) Additional receptacles may be wired as per local codes to the LOAD terminals(TB2).

Panel Cutout (Nema 1,12/4,4X)



SPECIFICATIONS, MECHANICAL

Housing: Cast aluminum base
 Latch: Type 304 Stainless Steel (1CR18NI19)
 Clear Housing Cover: Polycarbonate, V-O & UV rating

ExInPlex® Gray Shroud: V-O Flame Rating
 Gasket: Thermoplastic elastomer
 Insert Material: Acrylic UL94HB

APPROVALS

UL Recognized: E207344
 Type 4 (Gray), 4X(Black), IP-65 (Outdoor Use)
 CSA: LR110845 CE: EN61010/EN60950

